

# The Well Crafted Word

Del Ray Artisans  
.....since 1992

[www.radiodelray.com/artisans](http://www.radiodelray.com/artisans)  
November 2003

## November brings a new collaboration show

DRA is pleased to welcome our latest collaborative partner to the Colasanto Center Gallery, The Washington Woodworkers Guild. From November 7<sup>th</sup> through November 30<sup>th</sup> elegant tables, chairs, chests, boxes, turnings and more will be on display along with DRA members' works in landscape, still life and other perspectives.

Opening reception and an awards ceremony will take place for this juried/selected works show. at 7:00 PM, Friday, November 7<sup>th</sup>.

Expanded Gallery hours are: Fridays, 12:00-4:00PM, Saturdays, 10:00AM-4:00PM and Sundays, 12:00-4:00PM.

## The people have spoken

On Tuesday night, October 22<sup>nd</sup> Board election voting took place at the Colasanto Center Gallery. A very good turnout of members was on hand to cast their ballot.

Of course, following the balloting there was another of DRA's trademark community-involvement affairs with pizza, beer and refreshments.

Listed below are the slate of officers for the year forward.

### EXECUTIVE BOARD POSITIONS:

#### **PRESIDENT (Officer) Susan Downs Slattery**

\*Run Meetings / agenda \*Liaison  
\*Represent DRA \*Attend city (etc.) meetings as requested \*Coordinate communications between board members

#### **VICE PRESIDENT (Officer) Jen Whitman Chappell**

\*Shares duties of the President

#### **SECRETARY (Officer) L'Tonya Tobin**

\*Corporate records \*Minutes \*By laws  
\*Correspondences

### TREASURER AND ASST. TREASURER

#### **(Officers) Marlin Lord, Kathryn Brown (Asst.)**

\*Keeping accounts \*Monthly Financial reports  
\*Incorporation maintenance \*Taxes \*Accounts receivable / payable \*Mail \*Lease

### BOARD MEMBER POSITIONS:

#### **CURATOR COORDINATOR open**

\*Assist Gallery Coordinator in finding curators T-shirts, etc. \*Train & assist curators \*Maintain Curator's Manuals

#### **FACILITY Deborah Peterson**

\*Building maintenance / upgrades  
\*Exterior / landscaping (Garden committee)  
\*Computer maintenance \*Signage, lighting  
\*Cleaning, monthly painting maintenance

#### **COMMUNICATIONS Dave Nicholson**

\*Press Releases \*Newsletter \*Website content  
\*Graphics (Visual identity) \*Marketing/Brochure

#### **FUNDRAISING open**

\*Special events for fundraising \*T-shirts, etc.  
\*Benefactors / donors \*Adopt-a-Park  
\*Card making parties  
\*Grants and Endowments

#### **GALLERY COORDINATOR Karen Schmitz**

☐ Gallery shows & coordination  
☐ Liaison with curators ☐ Responsible gallery activities calendar

#### **MEMBERSHIP Doris Lockard**

\*Maintenance of mailing lists  
\*Welcoming new members/cards  
\*Renewal notices/cards \*Member statistics / demographics \*Benefits definitions  
\*Recruitment \*Directory  
\*Levels of membership

#### **OUTREACH open**

\*Promotion in community / region  
\*Art on the Avenue \*Gallery Without Walls  
\*1st Thursday in Del Ray \*Festivals  
\*Scholarships/endowments

#### **PROGRAMS Samantha Lentz**

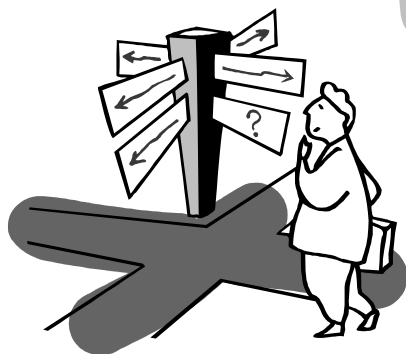
\*Workshops \*Demonstrations  
\*Art talks \*Classes  
\*Art Camp

#### **VOLUNTEERS Vivienne Lukacs**

\*Recruitment \*Coordinating  
\*Scheduling \*Appreciation / Perks  
\*Maintain Volunteer list

#### **HISTORIAN/ARCHIVIST open**

**COMMUNITY/CORPORATE REPRESENTATIVE open**



Contributors this month include:  
Susan Slattery, Kathryn Brown,  
Christopher Wright, Dave  
Nicholson, Karen Schmitz  
Edited by: Dave Nicholson  
Submission deadline-20<sup>th</sup> of  
month preceding (11/20 for  
December)  
email to: f8photog@yahoo.com

## Our youngest member...

...arrived on Saturday afternoon, October 18<sup>th</sup> to proud parents and DRA President, **Susan Downs Slattery** and husband and member, **Ted Smouse**.

Juliane Castle Smouse scaled in at 7 lbs 15 oz and 20" long. Mother and baby are doing well. Dad still is having residual shock and awe.



## Beootiful !

Pictured are DRA members receiving a Beautification Award from the Alexandria City Council. The award was the result of hard work by **Becky Heavner** and her group of dirty-fingered gardeners in transforming the space around the

Colasanto Center into a fragrant garden of colors. Pictured L-R: Roy Wright, Jane DeWeerd, Jordan Wright, Becky Heavner, Bryan Leister, Charlotte Landis, Kathryn Brown, Marlin Lord.

## Del Ray Dozen photography show stats

The first ever DRA photography-only show seems to have become a "must-do-again" classic. Many comments of "great show", "wonderful work" and "really top notch" were supplemented by sales of numerous works. Also, the silent auction garnered an additional \$315.

There were in excess of 250 attendees at the opening and the following day, Art on the Avenue brought in an additional 100+ guests.

Kudos to **Rob Rudick**, curator and **Jen Chappell**, curator's assistant for a terrific show.

## 2003 Calendar of Events



Nov. 7-30	<i>Washington Wood Workers Guild Collaboration</i> , curator- <b>Solon Candage</b> 202.244.3510, co-curator- <b>Martin Angebrannt</b> 703.521.7703
Nov. 11	Board meeting (7:00 PM)
Dec. 6-7	<i>Holiday Arts &amp; Craft Sale</i> (9:00 AM-4:00 PM), organizers- <b>Linda Silk</b> 703.533.7689 and <b>Liz Martinez</b>
Dec. 9	Board meeting (7:00 PM)
Jan. 9-25, 2004	<i>Renaissance</i> , curator- <b>Richard Wyvill</b>
Jan. 13, 2004	Board Meeting (7:00 PM)
Feb. 6	<i>RED2 Fundraiser</i> , (8:00 PM-midnight), co-chairs- <b>J. Chappell/S. Slattery</b>
Feb. 10	Board meeting (7:00 PM)
Feb. 13-29	<i>Desert Island Challenge</i> , curator- <b>Linda Silk</b> 703.533.7689
Mar. 5-28	<i>Springwater Fiber Art Collaboration</i> , curator- <b>Julie Geschwind</b> 703.768.3897/ DRA co-curator needed
Mar. 9	Board meeting (7:00 PM)
April x	<i>Spring All Member Show</i> , <b>curator needed</b>
Apr. 13	Board meeting (7:00 PM)
May 6	1 <sup>st</sup> Thursday Preview <i>Students Art Show</i> (6:00-9:00 PM)
May 7-23	<i>Students Art Show</i> , curator- <b>Linda Silk</b>
May 11	Board meeting (7:00 PM)
Jun. 3	1 <sup>st</sup> Thursday Preview <i>Fun 'n Games Show</i> (6:00-9:00 PM)
Jun. 4-Jul. 18	<i>Fun 'n Games</i> , curators- <b>Jen Chappell, Susan Slattery, Dave Nicholson</b>
Jun. 8	Board meeting (7:00 PM)
July 1	1 <sup>st</sup> Thursday event (6:00-9:00PM)
July 13	Board Meeting (7:00PM)
July 26-30	Art Camp
Aug. 10	Board Meeting (7:00PM)

## Art on the Avenue recap

Art on the Avenue scored another success under the early threat of rain and resulted in lots of fun, food and entertainment as the sky cleared and a beautiful day bloomed.

Many DRA members sold their masterpieces from booths along the Avenue or helped out at the DRA booth. Special thanks go to **Mart Larson** who worked tirelessly to line up artisans to demonstrate at the DRA booth or their individual booth.

Thanks to the following for staffing the DRA booth: **Dianna Diatz, Mart Larson, Doris Lockard, Marlin Lord, Jane DeWeerd and Pat Parkinson.**

Also special thanks to **Christopher Wright**, master sidewalk chalk artist for his whimsical drawings and arrows pointing to the Colasanto Center Gallery.

## Our continuing sponsors

Again our thanks to **Royce Flowers** for the terrific floral arrangements they provide for show openings.

Also a special thanks to **Mike Geissinger**, editor of the *Alexandria Guide* for his consideration in placing the DRA ad in this nifty publication of all things Alexandria.

## Wanna be listed ?

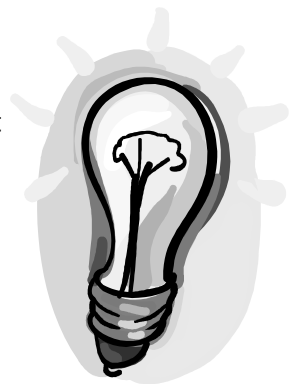
As an additional benefit of membership, Communication Director, **Dave Nicholson**, is exploring the creation of an e-Directory of artisan member disciplines.

The e-Directory would be an electronic version of a resumé and portfolio and could be used to market artisan member services in a business-to-business (B2B) and/or business-to-consumer (B2C) context.

Also being investigated is the possibility of placing such a directory on the DRA page at the RadioDelRay web page.

Is this something you would be interested in being listed in?

Contact **Dave** at 703.578.6471 or f8photog@yahoo.com with comments or questions.



## All that's left is the fun

DRA has enjoyed 4 successful collaborations with the Springwater Fiber Workshop (SWF) and plans are underway for a fifth joint show. Preliminary work is now beginning for a show in the Spring of 2004.

The theme of the show is "Conceal/Reveal". The process of creating this show has been firmly set in place...**All that's left is the fun!**

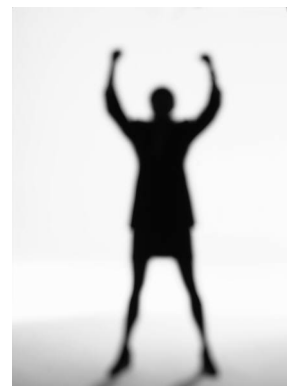
In 2004 the SWF co-curator will be **Julie Geschwind**, a weaver who also works with surface design, knitting, clothing design, dyeing and other textile arts. She assisted the curators in the first three collaborations and was the SWF co-curator in this year's show.

We currently are looking for a DRA member to work with Julie on Conceal/Reveal.

Previous DRA co-curators have been **Shelly Harris** (hi Shel, how's New York?), **Debbie Mezzetta**, **Theresa Esterlund** and **Kathryn Brown**. Any of them would be willing to share thoughts and lend an experienced voice to the 2004 co-curator.

**Kathryn Brown** already is on board to work with Julie on the financial aspects of the show.

Conceal/Reveal will be held in March 2004. If you've been looking for a way to become involved in the arts process-this is it! Please contact **Julie** at 703.768.3897 or at jgeschwind@cox.net or **Kathryn** at 703.549.5227 or neonkanb@psualum.com.



## Executive Board

### **President**

*Susan Downs Slattery*  
703.922.7290/summerh@erols.com

### **Vice-President**

*Jen Whitman Chappell*  
703.765.1510/jchappell@fsco.com

### **Treasurer**

*Marlin Lord*  
703.683.1112/mglaia@aol.com

### **Assistant Treasurer**

*Kathryn Brown*  
703.549.5227/neonkanb@aol.com

### **Secretary**

*L'Tonya Tobin*  
703.739.0424/ldtobin@yahoo.com

## Directors

### **Communications**

*Dave Nicholson*  
703.578.6471/f8photog@yahoo.com

### **Facility**

*Deborah Peterson*  
703.299.9422

### **Fundraising**

OPEN

### **Gallery Coordinator**

*Karen Schmitz*  
703.317.9340/schmityk@yahoo.com

### **Historian/Archivist**

OPEN

### **Membership**

*Doris Lockard*  
703.979.9229/doris-j-l@msn.com

### **Curator Coordinator**

OPEN

### **Outreach**

OPEN

### **Programs**

*Samantha Lentz*  
703.455.3130 /twinstar@aol.com

### **Volunteers**

*Vivienne Lukacs*  
703.979.8996/viv703@msn.com

### **Community Representative**

OPEN

## It's a, it's a ...

It's a digital camera that was anonymously donated to DRA last month. The camera will come in handy for documenting show openings, collecting photos of works on display and even

attending the occasional Alexandria Council meeting when awards and recognitions are made (see Beautification Award note elsewhere). Thank you whomever you were.

## Come and get it ...and power me up request

DRA member **Christopher Wright**, has available, free of charge, items that may be of interest to members such as: single edge razor blades, bubble envelopes, flat cardboard, etc.

He also is looking for access to a wood shop with a table saw or, ideally, a radial arm saw, band saw or drill press. He is experienced in the proper use of these and offers either cash or barter for time. Contact **Christopher** at [ellogo@yahoo.com](mailto:ellogo@yahoo.com) for info.

## Membership form

Name:	_____
Street:	_____
City, State, Zip:	_____
Telephone:(E)_____	(D)_____
Email:	_____
I am an artist yes___ no___ My medium is _____	
I will volunteer for : _____ gallery sitting___ fundraising___ phoning___ clean-up___	
show hanging___ exhibits planning___ teaching a class___	
curating/co-curating___ <b>just about anything, contact me</b> ___	
This is a membership renewal yes___ no___	
Membership dues: individual-\$35, household-\$50, corporate-\$100, student/senior/disabled-\$10	
Make payment payable to Del Ray Artisans and mail with this form to:	
<b>Del Ray Artisans Attn: Membership, 2210 Mt. Vernon Ave., Alexandria VA 22301</b>	

## About Our Organization...

**Arts Resource Foundation** is a 501(c)(3) public membership organization formed to create and support community-based arts organizations and promote the arts as a resource for community development. **Del Ray Artisans** is a community arts group featuring two and three dimensional works of decorative and functional art and fine crafts that provides them to the community through exhibits, lectures and instructional classes. **Del Ray Artisans** is funded, managed and operated by **Arts Resource Foundation**.

**DEL RAY ARTISANS**  
**MAIL: 2210 MT. VERNON AVE.**  
**ALEXANDRIA VA 22301**  
**703.838.4827**