

# The Well-Crafted Word

a monthly publication of Del Ray Artisans . . . since 1992 [www.TheDelRayArtisans.org](http://www.TheDelRayArtisans.org)

## Got Plenty of FUN & Squares at FUN-derful!



Let's remember laughter and grins again with *FUN-derful*, August 5-28. This curated exhibit by artist and FUN enthusiast Karen Schmitz will be jammed with "Ha Ha" artworks and donated mini-FUN-raiser "Squares".

Hey! The Sideshow is called "Can You Spare a Square?" Artists have donated 6x6" creations and these will be sold for \$20 each. Several "Spectacular" Squares will be given awards and framed for a \$2 raffle. (Winners drawn on July 28 at 5pm.) This is a mini affordable FUN-raiser with all proceeds supporting Del Ray Artisans (DRA). Please visit the gallery throughout August to see what's hanging on the clothesline. "Squares" are even coming from former DRA President Susan Slattery via Texas and former Director Pat Castile in Arizona. FUN-tastic!

- **FUN Preview Sneak Peek:** First Thursday, August 4, 6-9pm.
- **FUN Opening Reception:** Friday, August 5, 7-9pm. FUN Fashions encouraged--Silly String Prizes!
- **JOKE-ooke:** Saturday, August 13, 8-10pm. You tell the jokes. Hosted by FUN-sters Guy Jones & Karen Schmitz (Adults Only), donations requested.
- **Framing FUN-hows:** Monday, August 15, 7-8pm. Karen will show you some framing tips and how to make "Squares" look amazing. Donation with some FUN giveaways.
- **Closing FUN-raffle:** Sunday, August 28, 4-6pm. All donated "Squares" are now \$10 for a super duper "Square Deal" along with raffle pulls for framed "Spectacular" awarded Squares. Wowee!

**Meetup** Did you know that Del Ray Artisans is on Meetup.com? Meetup is a social networking website that facilitates offline group meetings in various localities around the world. Join our group at [www.Meetup.com/Del-Ray-Artisans-Events](http://www.Meetup.com/Del-Ray-Artisans-Events). If you aren't on Meetup yet, join - it's fun! We are looking to expand our reach on Meetup and are looking for members to "host" events in various Meetup groups. If you actively use Meetup, please contact Tracy Wilkerson at [RecycledWorks@yahoo.com](mailto:RecycledWorks@yahoo.com) to help with this. And yes, the time you spend on this goes toward your 12 required volunteer hours.

**Social Media Growth** DRA now has 2250 Twitter followers, 1840 Facebook fans, and 475 Instagram followers. This growth is entirely due to our dedicated social media volunteers. Thank you to our Facebook administrators: Gale Goldfarb, Dawn Wyse Hurto, Dani Keith, Brandy Lellou, and Linda Goetz Mierke. Special thanks to Liz Martinez for being our sole Twitter and Instagram administrator and Tracy Wilkerson for managing Meetup! Thank you to everyone who 'likes' and shares our posts!

## Welcome, New Members!

- David Daily
- Samantha Shelton
- Tab Sommer

## Pie Contest at Member Meeting

Have a favorite pie recipe? Wanting to try that pie recipe in the magazine you just drooled over? Then the Annual Pie Contest is for you! Part of the next Member Meeting, the Pie Contest will have judging for both savory and sweet pie categories. Prizes will be awarded and all attendees will get to sample the entries. Whether or not you enter the pie contest, you will want to attend this Sunday, August 7 meeting from 5-7pm. Come hungry, as the "Indoor Picnic" portion will feature our neighbor Pork Barrel BBQ. And, you will get all the latest updates on shows and plans for upcoming events and opportunities. Hope to see you there! Questions? Contact Linda: [Membership@DelRayArtisans.org](mailto:Membership@DelRayArtisans.org).

*Karen Thomas and Amber Gordon are delighted to open their Patron Member gift, a fused glass dish made by member Jennifer Webb.*



## President's Note

### *-Alcohol and Del Ray Artisans*

Many people have voiced concerns and objections to DRA's Board decision to serve NO alcohol at DRA receptions. This has been a long and hard journey for the Board. Why? Dire consequences could result. Each Board member could be fined up to \$10,000 per infraction and charged for illegally serving alcohol to the public. Further, the city could close the gallery. This is not a sudden change. We had been flying under the radar without realizing it, and the Board decided it could not take the financial and legal risk associated with serving alcohol when it was brought to our attention.

We CAN serve alcohol if we (1) get the proper ABC permit, (2) have an ABC Manager present at every event for that event's duration, and (3) have certified servers. Unfortunately, after asking the Board and numerous members to consider taking on these responsibilities, we could find no one willing to commit to the job. It is a job not to be taken lightly. If someone in our membership is interested in taking on these responsibilities, the Board will gladly revisit its decision. If you are that person, please contact Kim Joy at [President@DelRayArtisans.org](mailto:President@DelRayArtisans.org)

**Attention!!** Reminder to all participating artists. You may NOT pick up unsold artwork from an exhibit before the close of the exhibit unless there is an emergency and you have permission from the show curator or Curator Director. Pick up only during the designated time and date. You MUST pick up unsold artwork at that time. If you can't, ask someone else to pick up for you. DRA does not have space to store abandoned artwork. Any artwork left for over 30 days after a show closes becomes DRA property to be disposed of as seen fit. Questions? Contact [Curating@DelRayArtisans.org](mailto:Curating@DelRayArtisans.org).

## **Calls for Entry: Fire and Earth: National Ceramic Cup Exhibit and Regional 2-D Show (Sep 2-Oct 2, 2016)**

The calls for entry (CFE) are open for this hybrid exhibit that combines a national ceramic cup exhibit and a regional 2-D show. Fire and earth are two of the four elements. This exhibit honors how fire in the kiln (be it fueled by wood, gas, or electricity) transforms earth (clay) into functional drinking vessels (cups, mugs, tankards, tumblers, goblets, and teabowls). The 2-D exhibit on the walls of the gallery should reflect and communicate about these elements along with the 3-D ceramic pieces. The 2-D works' theme of illustrating the forces of nature allows a broad interpretation of how the natural elements affect our world, and echoes the process of the ceramic art. The exhibit is juried by Dan Finnegan, a nationally and internationally recognized potter. There will be cash prizes both for the cups ("St. Elmo's Cup") and the 2-D work ("Artifacts, Inc Award"). There are separate CFEs for the 3-D and 2-D entries (with different entry dates) and information about a workshop hosted by Dan Finnegan at the Clay Queen Pottery in Del Ray. Entry to this exhibit is by online submission. Details at [TheDelRayArtisans.org/CFE](http://TheDelRayArtisans.org/CFE)



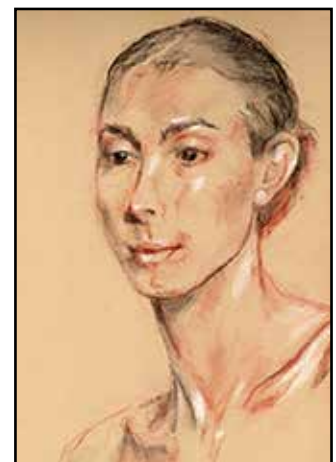
---

## **Life Drawing starts up again in August at DRA**

Join us at the gallery for one of our upcoming Life Drawing sessions. We operate on a drop-in basis so no registration is required. All skill levels are welcome. Fees range from \$8-12. Please no oils or acrylics. If you have questions, contact Katherine Rand at 703-836-1468 or [LifeDrawing@DelRayArtisans.org](mailto:LifeDrawing@DelRayArtisans.org).

Upcoming life drawing sessions include:

- Wed, Aug 10, 2-5pm, Short/Long, (clothed)
- Wed, Aug 10, 6:30-9:30pm, Long
- Sun, Aug 21, 9:30-11:30am, Gesture
- Wed, Aug 24, 2-5pm, Short/Long
- Wed, Aug 24, 6:30-9:30pm, Long
- Wed, Sep 7, 2-5pm, Short/Long
- Wed, Sep 7, 6:30-9:30pm, Long
- Sun, Sep 18, 9:30-11:30am, Gesture (clothed)



*Portrait by Linda Lowery*

## MANY THANKS TO ALL WHO MADE 2016 GUAC SUCCESSFUL!

We had a terrific line-up of instructors and workshops, with something for everyone, to enhance and expand our artistic skills. In addition to these fine teachers and eager participants, and from the first planning stages to the final wrap up, many dedicated Del Ray Artisans worked tirelessly to ensure that this year's Grown Ups Art Camp (GUAC) was a success:

- **Initial start-up Planning:** Theresa Kulstad (Programs) who got this underway months before the first workshop opened;
- **Postcard Artwork and Design:** Theresa Kulstad, Ellen Hamilton; distribution by an army of energetic DRA members and workshop instructors;
- **Initial Publicity and Articles:** Betsy Mead, Rita Schooley (Communications & Newsletter), Dawn Wyse Hurto (Technology), for articles and ongoing information, as workshops and schedules got underway;
- **Facebook and Social Media Posting:** Theresa Kulstad, Karen Schmitz, Dawn Wyse Hurto, Tracy Wilkerson, and some of our instructors whose posts kept us all intrigued by their workshop descriptions, together with glowing endorsements from happy workshop participants;
- **Art Supply Sale:** Betsy Mead, for getting the word out, setting it up and maintaining an attractive little "store" of good art stuff;
- **Invisible, behind the scenes support:** Katherine Rand, Donna Gallo, Tracy Wilkerson, Steve Lally, and instructors who helped set up the workshops (Nancy Kline, Kim Joy, Stacy Rausch, Ken Reed, Rita Schooley...) plus a few of you who reached out to make yourselves available "in case." The most important "behind the scenes support" came from our office manager, Dani Keith, who managed all our workshop registration and scheduling, tracking enrollments both online and for DRA's accounts. She also worked closely with me in contacting instructors and participants. Dani's calm, cheerful, thorough, always-available efforts pulled it all together.

Some of the workshops surely deserve a "rewind" and could be scheduled during the year. We would really like to hear from you on workshops you'd take again, or ones you wanted to, but dates and times didn't work out. Please contact me at [Programs@DelRayArtisans.org](mailto:Programs@DelRayArtisans.org) and tell us what workshops you'd like to see at DRA during the rest of the year. Thanks to all of you who made this possible!

--**Michele Reday Cook**, GUAC Coordinator & Acting Programs Director

### Partners in Art Field Trip

On July 11, these folks from DRA's Partners In Art took a tour of the National Museum of Women in the Arts exhibit "She Who Tells the Story", an exhibit of contemporary photography from Iran and the Arab world.

This was the second museum outing the group has enjoyed in the past year. Partners, led by Katherine Rand and Millie Mateu, meets the first or second Monday most months from 2-4pm at the gallery and provides an opportunity for artists to share their goals and current projects, and give and receive feedback on recent artwork. Come join this safe, supportive group. The next meeting is August 8, 2016 from 2-4pm.



### Channel Your Inner Architect for DRA



Have you ever wanted to get into real estate: a renovation? Flip a property? Or build new? Now is your chance! This October DRA will be hosting a silent auction fundraiser, "The Birdhouses of Del Ray", and we invite members to create one-of-a-kind birdhouses for the auction. The birdhouses will be displayed at the gallery from October 7-25 as part of the *Local Flavor* exhibit. DRA artists are invited to submit 3-D functional or decorative birdhouses of any materials. You have the option of creating your piece completely from your choice of materials or buying a 'blank' birdhouse from DRA to alter and embellish. We'll have a limited number of blanks for sale (\$3-\$10) at the gallery, starting at the membership meeting, August 7. The Call for Entry is available at the gallery and online at

[www.TheDelRayArtisans.org/CFE](http://www.TheDelRayArtisans.org/CFE).

Questions? Please contact Linda Elliff at [LLEliff@aol.com](mailto:LLEliff@aol.com) or Barbara Boehm at [boehmbarb@gmail.com](mailto:boehmbarb@gmail.com).

### \$\$ for DRA!

Thanks to Brandy Lellou (DRA Fundraising Events Director), DRA just received a check for \$1,147.35! Brandy signed Del Ray Artisans up for the Whole Foods Market Nickels for Nonprofits program. Between May 1 and June 30, Whole Foods in Old Town Alexandria collected nickels for DRA from everyone who generously donated their nickels when using their own grocery bags. What an amazing return! Del Ray Artisans is very grateful to Brandy, Whole Foods, and everyone who donated their nickels!!





Nicholas A. Colasanto Center  
2704 Mount Vernon Avenue  
Alexandria, VA 22301-1124

703.838.4827  
TheDelRayArtisans.org

**Gallery Hours:**

Thursday: noon-6 pm  
First Thursday:  
(April-Sept.) noon-9 pm  
Friday: noon-9 pm  
Saturday: noon-9 pm  
Sunday: noon-6 pm

**Submission Deadline:** 15th of the month  
Editor: Newsletter@DelRayArtisans.org

Del Ray Artisans, founded in 1992, is a nonprofit organization whose mission is to promote art for the benefit of artists and the community.

**2016 Board of Directors**

- **Kim Joy, President**  
President@DelRayArtisans.org
- **John Bordner, Vice President**  
VP@DelRayArtisans.org
- **Stephen Lally, Treasurer**  
Treasurer@DelRayArtisans.org
- **Nancy Kline, Assistant Treasurer**  
ATTR@DelRayArtisans.org
- **Kathryn A. Brown, Secretary**  
Secretary@DelRayArtisans.org
- **Michele Reday Cook, Past President (Advisory)**  
PastPresident@DelRayArtisans.org

**Directors**

- **Sean Crumley, Archives**  
Archives@DelRayArtisans.org
- **Rita Schooley, Communications**  
Communications@DelRayArtisans.org
- **Marlin Lord, Community**  
Community@DelRayArtisans.org
- **Kathy Turner, Curating**  
Curating@DelRayArtisans.org
- **Ron Blank, Facilities**  
Facilities@DelRayArtisans.org
- **Brandy Lellou, Fundraising Events**  
Fundraising@DelRayArtisans.org
- **Grants & Sponsorship (Open Position)**  
Grants@DelRayArtisans.org
- **Linda Elliff, Membership**  
Membership@DelRayArtisans.org
- **Outreach (Open Position)**  
Outreach@DelRayArtisans.org
- **Programs (Open Position)**  
Programs@DelRayArtisans.org
- **Dawn Wyse Hurto, Technology**  
Technology@DelRayArtisans.org
- **Joshua Oliveira, Volunteers**  
Volunteers@DelRayArtisans.org
- **Lydia Walter and Pat Hickey, Youth Programs**  
Youth@DelRayArtisans.org

**Calendar**

**August 2016**

- 1 Artwork Receiving for *FUN-derful* and Donation "Squares" due, 6-8pm
- 4 First Thursday (Music & Dance on the Avenue) and FUN Preview, 6-9pm
- 5-28 **SHOW: *FUN-derful*** (Curator Karen Schmitz)
- 5 Opening Reception, 7-9pm
- 7 Member Meeting/Picnic & Pie Contest, 5-7pm
- 8 Partners in Art, 2-4pm
- 9 Board Meeting, 7pm
- 10 Life Drawing, 2-5pm, Short/Long (clothed)
- 10 Life Drawing, 6:30-9:30pm, Long
- 13 JOKE-eoke, Adult only, 8-10pm (donations)
- 13 ***Fire and Earth 2-D Digital Entries Due***
- 15 Framing FUN-hows, 7-8pm (donations)
- 21 Life Drawing, 9:30-11:30am, Gesture
- 24 Life Drawing, 2-5pm, Short/Long
- 24 Life Drawing, 6:30-9:30pm, Long
- 28 Closing FUN-raffle & "Square" Deal, 4-6pm
- 28-29 Artwork Receiving for *Fire and Earth*, 6-8pm

**September 2016**

- 1 First Thursday (Health & Wellness), 6-9pm

More information at: [calendar.TheDelRayArtisans.org](http://calendar.TheDelRayArtisans.org)

**September 2016 (continued)**

- 2-Sep 2 **SHOW: *Fire & Earth*** (Curator Stephen Lally)
- 2 Opening Reception, 7-9pm
- 7 Life Drawing, 2-5pm, Short/Long
- 7 Life Drawing, 6:30-9:30pm, Long
- 12 Partners in Art, 2-4pm
- 13 Board Meeting, 7pm
- 18 Life Drawing, 9:30-11:30am, Gesture (clothed)
- 21 Life Drawing, 2-5pm, Short/Long (clothed)
- 21 Life Drawing, 6:30-9:30pm, Long

**October 2016**

- 1 Art on the Avenue, 10am-6pm
- 2-3 Artwork Receiving for *Local Flavor*, 6-8pm
- 7-30 **SHOW: *Local Flavor*** (Curator Dawn Wyse Hurto)
- 7 Opening Reception, 7-9pm
- 10 Partners in Art, 2-4pm
- 11 Board Meeting, 7pm
- 12 Life Drawing, 2-5pm, Short/Long (clothed)
- 12 Life Drawing, 6:30-9:30pm, Long
- 23 Life Drawing, 9:30-11:30am, Gesture
- 25 Annual Member Meeting & Elections

**Join or renew your Del Ray Artisans membership today!**

Visit [TheDelRayArtisans.org/Membership](http://TheDelRayArtisans.org/Membership) for details.

**Other Key Contacts**

- **Dani Keith, Office Manager**  
Gallery@DelRayArtisans.org
- **Eileen O'Brien, GWW Curator**  
GWW@DelRayArtisans.org
- **Betsy Mead, Newsletter Editor**  
Newsletter@DelRayArtisans.org
- **Melanie Bikowski & Liz Martinez, Weekly eNews Editor**  
eNews@DelRayArtisans.org

Visit [ArtsEventsAlexandria.com](http://ArtsEventsAlexandria.com) for performing and visual arts happenings in Alexandria. Del Ray Artisans is a member of Alexandria Convention & Visitors Association and Alexandria Arts Forum, who make possible this website.

**Special thanks** to the City of Alexandria, Alexandria Commission for the Arts, Virginia Commission for the Arts, and National Endowment for the Arts, for their continued support of Del Ray Artisans, a 501(c)(3) organization.



## Open Life Drawing Sessions – Summer & Fall 2016

Looking for a chance to hone your figure drawing skills? Del Ray Artisans offers a range of open life drawing sessions for just this purpose. Both nude and clothed models are featured. These sessions operate on a drop-in basis so there is no need to register in advance. Bring your supplies and join us at the gallery to draw or paint from our live models. We don't supply easels but you are welcome to bring your own if you want to use one. *Please no acrylics or oils*; pastels, watercolor and ink are permissible. All skill levels are welcome.

The fee for each three-hour session is \$10 for DRA members and \$12 for non-members. Two-hour sessions are \$8 for members and \$10 for non-members.

If you have any questions, please contact Katherine Rand at 703.836.1468 or [LifeDrawing@DelRayArtisans.org](mailto:LifeDrawing@DelRayArtisans.org).



### Session Types

#### Gesture Sessions (two hours)

These two-hour sessions are composed primarily of dynamic 1 to 5 minute poses.

#### Short/Long Pose Sessions (three hours)

The three-hour short/long pose sessions start with some short 1 to 5 minute warm-up poses and progressively move into longer poses lasting 10 to 45 minutes.

#### Long Pose Sessions (three hours)

These sessions are generally composed of two long poses with perhaps a few warm-ups at the start.



Drawings by Katherine Rand

### Upcoming Sessions

Sessions feature nude models unless otherwise noted.

<b>Wed Aug 10</b>	2:00-5:00pm	Short/Long (clothed)
	6:30-9:30pm	Long
<b>Sun Aug 21</b>	9:30-11:30am	Gesture
<b>Wed Aug 24</b>	2:00-5:00pm	Short/Long
	6:30-9:30pm	Long
<b>Wed Sep 7</b>	2:00-5:00pm	Short/Long
	6:30-9:30pm	Long
<b>Sun Sep 18</b>	9:30-11:30am	Gesture (clothed)
<b>Wed Sep 21</b>	2:00-5:00pm	Short/Long (clothed)
	6:30-9:30pm	Long
<b>Wed Oct 12</b>	2:00-5:00pm	Short/Long (clothed)
	6:30-9:30pm	Long
<b>Sun Oct 23</b>	9:30-11:30am	Gesture
<b>Wed Oct 26</b>	2:00-5:00pm	Short/Long
	6:30-9:30pm	Long
<b>Wed Nov 9</b>	2:00-5:00pm	Short/Long
	6:30-9:30pm	Long
<b>Sun Nov 20</b>	9:30-11:30am	Gesture (clothed)
<b>Wed Dec 7</b>	2:00-5:00pm	Short/Long
	6:30-9:30pm	Long

Supported in part by:



