



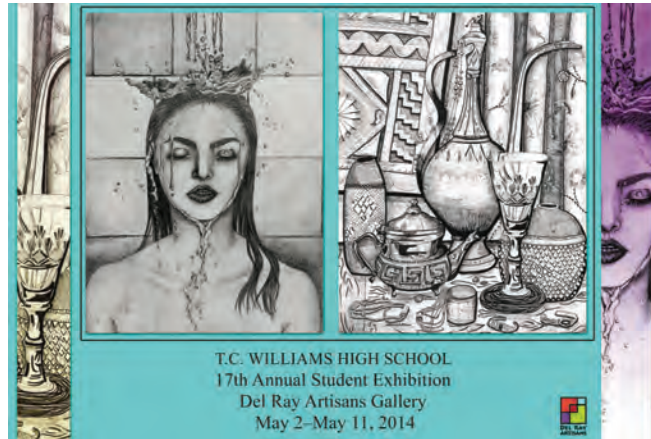
The Well-Crafted Word

a monthly publication of Del Ray Artisans ... since 1992 www.thedelrayartisans.org

Student Exhibit May 2 – 11 Showcases Alexandria's Future Artists

Come celebrate
20 new members to
those proud ranks!

Opening reception :
Friday, May 2, 7 – 9pm



Del Ray Artisans and the T.C. Williams High School Art Department jointly present the 17th Annual Student Art Show at the gallery, from Friday, May 2 through Sunday, May 11. The exhibit features the work of members of the National Art Honor Society.

Students are inducted into the NAHS upon recommendation by their art teachers. T.C. students must have completed a minimum of two years of high school art study during which they have demonstrated exemplary achievement. Twenty juniors and seniors comprise this year's selection. Many of these students will continue to study art at the college level, and much of the work on exhibit was featured in their winning college admission portfolios. T.C. Williams offers a vibrant art program that attracts hundreds of 9th-12th graders each year. Former students can be counted among today's working fine artists and art teachers, graphic artists and web designers, fashion and fabric designers, animators and special effects artists.



Special Exhibit: EYES ON THE BORDER from May 16 – June 1

Beyond landscapes, cultures, borders and boundaries lies the artistic language of the human race. In this collaborative exhibit, artists from Del Ray Artisans (DRA) and Art Latin American Collective Project (ALACP) are invited to explore universal themes from the individual perspective of each artist. "Eyes on the Border" is both a celebration of Latin American art and culture and a look at how we are all influenced by places, borders and boundaries, political or cultural, real or imagined. Latin American artists living and working in this area, and Del Ray Artisans with their own immigrant experience share their roots and translate their realities into a vision influenced by the virtual world and globalization. This show will be open to ALACP and DRA members. ALACP artists should submit art directly to curator David Camero. Selected ALACP artwork will be displayed together with selected artwork from DRA members who may submit art in person May 11 and 12 (see Call For Entry). A special display of masks from the collection of David Camero will accompany this exhibit. For more information, DRA members can contact president@thedelrayartisans.org. ALACP members can contact David Camero at mactrovattore@yahoo.es.

Welcome! New Members Who Joined Us Recently ...

- Bird Carrier – Pencil, Pen
- Meg Chevalier
- Stephen Lally – Ceramics
- Veronica Perez

May 18 Member Meeting: "Photographing Your Artwork" by David Kosar

Help is on the way to solve your photography quandary at our Member Meeting on Sunday, May 18 from 2 to 4 pm. DRA member photographer David Kosar will present basic concepts of photographing your artwork.

More often, juried art shows and other venues only accept electronic submissions for consideration. A key to this process is submitting quality images. For artists unfamiliar with photography or electronic format submissions, this can be intimidating. The first step to learning this process: **bring any camera you use and its instructional manual to the meeting for a mini-workshop on the basics of how to photograph your artwork like a pro.**

Do you need a tripod? Should you turn on the ceiling lights? Is it better to photograph the artwork outside or inside? On the wall or on the floor? Does your camera have a macro feature? What is an f-stop? ... Does "resolution" have anything to do with Congress? ...

David will answer such questions, give helpful hints and tips for photographing your artwork, and address camera fundamentals. Time will be allowed for questions so individual problems can be addressed. This is a free benefit program for DRA members. Refreshments will be served.

— Linda Elliff, Membership Director



Alexandria Art Market Opens Saturday, May 10!

Held on 2nd Saturday, May – October, from 10 am – 4 pm

Del Ray Artisans' 5th season of the Alexandria Art Market opens festively with live music. The "rain or shine" market is held in the park adjoining the gallery. Original artwork from over 25 artists will be displayed for sale, including painting, photography, pottery, jewelry, and glasswork. — Kimberley Bush, Coordinator (703-627-7656, ArtMarket@TheDelRayArtisans.org)



Next meet-up on Tuesday, May 20

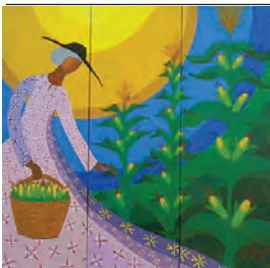
Social Lights

On select evenings, 6 – 9 pm, this program allows an open space to encourage a positive and motivational environment for artists to network and share ideas. A small donation is requested. See monthly schedule on page 4 or at www.TheDelRayArtisans.org/SocialLights. Questions? Email Programs@TheDelRayArtisans.org

See Plaza Suite on June 13, Support the Gallery

Our June show, **SUITES**, will sensationalize the gallery, while the Little Theatre of Alexandria offers up their own intrigues!

On Friday, June 13, LTA presents Neil Simon's *Plaza Suite*, where Del Ray Artisans will host a special Reception. Tickets for the June 13 showing of Neil Simon's *Plaza Suite* at LTA are only available for purchase through Del Ray Artisans. Tickets are just \$40 each for the entire evening, including delicious h'orderves, reception elbow-rubbing, an art auction, and the *Plaza Suite* show! For more information or to pre-order tickets, visit: TheDelRayArtisans.org/LTA



By Women, About Women Exhibit Runs thru June 29

Corn Keepers
by Pat Hickey

The Gallery Without Walls exhibit at Prudential PenFed Realty (300 N. Washington St, Suite 100, Alexandria VA 22314) features the Living Legends of Alexandria, photographic portraits of women who have made a positive, tangible difference to Alexandria's quality of life, as well as works by Del Ray Artisans women artists highlighting women and women's themes. View the exhibit through June 29, Monday – Friday, 9 am – 5 pm. — *Eileen O'Brien*, GWW@TheDelRayArtisans.org.

Revolution: Art & Technology Exhibit Ran April 4 – 27



Photos by Ann Krug

The show had a wonderful turn-out for the opening reception on April 4. The quality and variety of artwork submitted by DRA's talented artists were exceptional. At the reception, the curators awarded a *Best in Show* to Roger Foster for his 2D photographic collage titled *Air Force Memorial from Below*. Barb Boatman received a *Best in Show* for her 3D mixed media clock montage titled *Old Tech + New Tech = Recycled Tech*. Viewers had the opportunity to choose their favorite top 5 pieces until April 18.

On Movie Night, *The Thomas Crown Affair* was enjoyed by all who attended, including a group of young singles from Events and Adventurers. On Saturday, April 12, artists gathered at the gallery for a roundtable discussion and demonstration of Internet sites that provide art supplies, classes and demonstrations and promote artist's work. A link of appropriate Internet sites will be linked to DRA's web site after the show.

We would like to thank Michele Reday Cook and Lesley Hall for their encouragement and support during the show planning. The following assisted with technical advice and skills as curators took the show from conception to execution: Tracy Wilkerson, Betty Plummer, Dawn Wyse Hurto, Gloria Vestal, Tamara Wilkerson, Gale Goldfarb, Kim Joy, Liz Martinez, John Messina and Paul Alers. To all the artists who entered work, provided refreshments, and helped host the opening reception, we are truly grateful. It is through your effort that the opening reception was so well attended and received. Your support throughout April to staff the gallery during open hours is greatly appreciated. — *Ann Krug and Connie Saunders, Curators*

Towel/Blanket Drive for the Animal Shelter

Please bring your clean, older towels and blankets to the **SUITES** opening reception on Friday, June 6 for donation to the Animal Welfare League of Alexandria. The animals at the shelter use these items for bathing, comfort and warmth. If you have leashes, collars, toys (in "like new" condition) and bowls these donations are also welcome.

Results of Recent Fundraising Events

Spring2Action on April 9

We exceeded our Spring2Action fundraising goal of \$1000 in 24 hours by \$10! Our participation last year raised \$895, so this year was 12% better! We do pay fees for the event/service, so our **2014 take-home amount is \$939.38**. This is only our second year participating in Spring2Action. 121 non-profit organizations participated this year. Del Ray Artisans came in 81st place in Most Donors 2014 and 83rd place in Most Dollars 2014. **Thank you to everyone who donated! Thank you to Liz and Gale for advertising this event on Twitter and Facebook.**

— *Dawn Wyse Hurto, Director of Technology*

Styrofoam "Heads Up" FUNdraiser Results

During the *Portraits of Pop Culture* exhibit "FUNdraiser", 40 heads were sold at \$5 each. Of those, 24 came back and 19 sold, for a total of \$1405 to benefit Del Ray Artisans exhibits. Three sold opening night in our "buy it now" feature and the rest sold through our standard silent auction process. — *Lesley Hall, Director of Curating*

Power of the Postcard

For every exhibit and major event, we print 2,500 postcards to share with our mailing list and the community. Curators are encouraged to have their postcard printed and on the desk during the preceding exhibit's opening reception so gallery visitors can plan in advance. Curators enlist volunteers to take stacks of postcards to food, retail, business offices and venues. Exhibiting artists are also encouraged to share postcards with friends, neighbors and their local business venues. Social media announcements are also great, but remember — **there is POWER in receiving a real postcard!** — *Betty Plummer, Communications Director*



Grown-Ups Art Camp Coming This Summer ...

Ever notice all the fun summer activities and camps are for kids each year? What about us?! Worry no more, because DRA is hosting its second Grown-Ups Art Camp from June 30 – July 11. We'll offer workshops in the morning, afternoon and evening — take as many classes as you want. Stay tuned for the workshop schedule coming out THIS month!
— *Tamara Wilkerson, Programs Director*
(Programs@TheDelRayArtisans.org)

Join DRA as an Artist or Supporter! Renewal New Member

Name _____

Title First M.I. Last

Additional Household Members _____

Organization / Affiliation _____

Address _____

Street City State Zip

Phone Home (____) _____ Cell (____) _____ Work (____) _____

E-mail Address(es) _____

Artist Media _____

Patron

\$1,000 Platinum

\$500 Gold

\$250 Silver

Patrons are considered Active Members and have exhibition privileges. Volunteer hours are not expected.

Active Member

\$75 Household

\$50 Individual

\$25 Senior (62 & over)

\$25 Full-time Student/Disabled

Active Members enjoy privileges of exhibiting in shows and are expected to contribute at least 12 volunteer hours per year. This does not include volunteer commitments for exhibiting in shows.

Friend

\$35 Friend of DRA

Friends may participate in workshops, classes, and programs as members. Friends do not have exhibition privileges. Volunteer hours are not expected.

All membership levels receive DRA mailings.

DRA has "gone green!" A monthly notice is sent to all members via email when the newsletter has been published online. Paper copies of the newsletter are available at the gallery.

I would like to make an additional donation to Del Ray Artisans in the amount of \$ _____.

I would like to make an additional donation to the DRA Ted Eichers Memorial Art Scholarship for \$ _____.

I would like to make an additional donation to the DRA Art Camp for Youth for \$ _____.

Please indicate committees on which you will serve to meet your 12-hour per year volunteer commitment:

- Communications Newsletter Facilities Archives Outreach Anything DRA needs
 Fundraising Grants Publicity Volunteers Financial Other, special talents:
 Programs Website Gardening Administrative Shows _____

Signature _____ Date ____ / ____ / ____

Checks payable to: Del Ray Artisans. Mail to: Del Ray Artisans, Membership, 2704 Mt. Vernon Avenue, Alexandria, VA 22301, or join online: www.TheDelRayArtisans.org.



Nicholas A. Colasanto Center
2704 Mount Vernon Avenue
Alexandria, VA 22301-1124

703.838.4827

www.TheDelRayArtisans.org

Gallery Hours:

Thursday: noon-6 pm
First Thursday
(May-Sep): noon-9 pm
Friday: noon-9 pm
Saturday: noon-9 pm
Sunday: noon-6 pm

Submission Deadline: 15th of the month
Editor: newsletter@thedelrayartisans.org

Del Ray Artisans, founded in 1992, is a nonprofit organization whose mission is to promote art for the benefit of artists and the community.

2014 Calendar

May 2014

1 First Thursday, open until 9pm
2 – 11 **SHOW: TC Williams Students TC**
Williams Art Dept curator
Partners in Art, 2-4pm
5 Life Drawing, 7-9pm, Short
5 Life Drawing, 11-1pm, Gesture (clothed)
7 Life Drawing, 2-5pm, Short/Long (clothed)
10 Alexandria Art Market, 10am-4pm
ArtMarket@thedelrayartisans.org
13 Board Meeting, 7 pm (not at gallery)
16 – Jun 1 **SHOW: Eyes On the Border** with
ALACP & sponsor/curator David
Camero, DRA curators Lesley Hall,
Michele Reday Cook
18 Life Drawing, 9:30-11:30am, Gesture
18 Member Benefit Program, 2-4pm
20 SocialLights, 6-9pm
21 Life Drawing, 2-5pm, Short/Long (clothed)
28 Life Drawing, 6:30-9:30pm, Long

June 2014

5 First Thursday, open until 9pm
6 – 29 **SHOW: SUITES: Scandalous**
Uproarious Intriguing Titillating
Entanglements & Seductions Tracy
Wilkerson John Bordner curators
RecycledWorks@yahoo.com
JBordner@wiscenterprises.com
9 Partners in Art, 2-4pm
9 Life Drawing, 7-9pm, Short (clothed)
10 Board Meeting, 7pm
11 Life Drawing, 11am-1pm, Gesture
11 Life Drawing, 2-5pm, Short/Long
13 Fundraiser Reception at Little Theater
of Alexandria (John Bordner & Tracy
Wilkerson coordinating)
14 Alexandria Art Market, 10am-4pm
ArtMarket@thedelrayartisans.org
17 SocialLights, 6-9pm
18 Life Drawing, 6:30-9:30pm, Long
22 Life Drawing, 9:30-11:30am, Gesture (clothed)
25 Life Drawing, 2-5pm, Short/Long

July 2014

Jun 30-11 **Grown-Ups Art Camp**
GUAC@thedelrayartisans.org
3 First Thursday, open until 9pm
8 Board Meeting, 7pm (not in gallery)

12 5th Annual Yard Sale (indoors)
12 Alexandria Art Market, 10am-4pm
ArtMarket@thedelrayartisans.org
14 – 19 **Art Camp** Week 1
21 – 26 **Art Camp** Week 2

August 2014

1 – 31 **SHOW: Board Showcase**
7 First Thursday, open until 9pm
4 Partners in Art, 2-4pm
4 Life Drawing, 7-9pm, Short
6 Life Drawing, 11-1pm, Gesture (clothed)
6 Life Drawing, 2-5pm, Short/Long (clothed)
9 Alexandria Art Market, 10am-4pm
ArtMarket@thedelrayartisans.org
12 Board Meeting, 7pm
13 Life Drawing, 6:30-9:30pm, Long
17 Life Drawing, 9:30-11:30am, Gesture
19 SocialLights, 6-9pm
20 Life Drawing, 2-5pm, Short/Long
24 Annual Cookout/Pie Contest, 5-7pm
27 Life Drawing, 6:30-9:30pm, Long

September 2014

4 First Thursday, open until 9pm
5 – 28 **SHOW: Put a Bird on It** Barbara
Boehm & Linda Elliff curators
boehm.barb@gmail.com
LLEliff@aol.com
6 WORKSHOP tbd, 9-1pm
8 Partners in Art, 2-4pm
8 Life Drawing, 7-9pm, Short (clothed)
9 Board Meeting, 7pm
10 Life Drawing, 11am-1pm, Gesture
10 Life Drawing, 2-5pm, Short/Long
11 Life Drawing, 6:30-9:30pm, Long
13 Alexandria Art Market, 10am-4pm
ArtMarket@thedelrayartisans.org
16 SocialLights, 6-9pm
17 Life Drawing, 6:30-9:30pm, Long
21 Life Drawing, 9:30-11:30am, Gesture (clothed)
24 Life Drawing, 2-5pm, Short/Long
25 Life Drawing, 6:30-9:30pm, Long

2014 Board of Directors

President
Michele Reday Cook
president@thedelrayartisans.org

Vice President
John Bordner
vp@thedelrayartisans.org

Treasurer
Kimberley Bush
treasurer@thedelrayartisans.org

Assistant Treasurer
Gale Goldfarb
attr@thedelrayartisans.org

Secretary
Kathryn A. Brown
secretary@thedelrayartisans.org

Directors
Archives
John Hiller
archives@thedelrayartisans.org

Communications
Betty Plummer
communications@thedelrayartisans.org

Community/Business
Liaison
Imani Russell
community@thedelrayartisans.org

Curating
Lesley Hall
curating@thedelrayartisans.org

Facilities
Marlin G. Lord
facilities@thedelrayartisans.org

Fundraising
Your Name Here ☺
fundraising@thedelrayartisans.org

Membership
Linda Elliff
membership@thedelrayartisans.org

Outreach
Kim Joy
outreach@thedelrayartisans.org

Programs
Tamara Wilkerson
programs@thedelrayartisans.org

Technology
Dawn Wyse Hurto
technology@thedelrayartisans.org

Volunteers
Rusty Lynn
volunteers@thedelrayartisans.org

Youth Programs
Stacy Rausch
youth@thedelrayartisans.org

Newsletter Editor
Betty Plummer
newsletter@thedelrayartisans.org

Weekly eNews Editors
Liz Martinez, Kim Joy
enews@thedelrayartisans.org

Office Manager
Tracy Wilkerson
gallery@thedelrayartisans.org

Registrar
Ellyn Ferguson
registrar@thedelrayartisans.org

Web Curator
Kelly Cox
webcurator@thedelrayartisans.org

Visit **ArtsEventsAlexandria.com** for performing and visual arts happenings in Alexandria. Del Ray Artisans is a member of **Alexandria Convention & Visitors Association** and **Alexandria Arts Forum**, who make possible this website.

Special thanks to the City of Alexandria, the Alexandria Commission for the Arts, the Virginia Commission for the Arts, and the National Endowment for the Arts, for their continued support of Del Ray Artisans, a 501(c)(3) organization.



CALL FOR ENTRY

Eyes On The Border

Del Ray Artisans & Art Latin American Collective Project
May 16 - June 1, 2014

Beyond landscapes, cultures, borders and boundaries lies the artistic language of the human race. In this collaborative exhibit, artist members from **Del Ray Artisans (DRA)** and **Art Latin American Collective Project (ALACP)** are invited to explore universal themes from the individual perspective of each artist.

“**Eyes On The Border**” is both a celebration of Latin American art and culture and a look at how we are all influenced by places, borders and boundaries, political, or cultural, real or imagined. Latin American artists living and working in this area, and Del Ray Artisans with their own immigrant experience share their roots and translate their realities into a vision influenced by the virtual world and globalization. A special display of masks from the collection of David Camero will accompany this exhibit.

ALACP Curator: David Camero (mactrovattore@yahoo.es)
DRA Curators: Michele Reday Cook (President@TheDelRayArtisans.org) and
 Lesley Hall (Curating@TheDelRayArtisans.org)

Entry Details:

- Open to DRA & ALACP members only
- Artwork receiving is Sunday, May 11th from 6-8pm and Monday, May 12th from 6-8pm
- The entry fee for both DRA & ALACP members is \$5 per piece (non-refundable).
- DRA Artists may submit up to 3 pieces that express the themes of this show.
- ALACP Artists may submit artwork directly to curator David Camero before May 11th for selection. ALACP artists may bring accepted work to the DRA gallery on May 11 & 12th from 6-8pm.
- Artwork must be ready to hang and display, with wire and screw eyes, mounting and/or display stand, framed, matted, or with edges finished. We cannot show work that is not ready for exhibition.
- See www.TheDelRayArtisans.org/ArtGuidelines for details.

Accepted Artist Requirements & Fine Print:

- Artists are responsible for drop-off/pick-up arrangements.
- All Artists must gallery host and/or volunteer with set-up, hanging, opening reception, and/or take down. Please bring your calendars, PDAs, whatever you use for scheduling, so you can sign up for duties on receiving. We'll ask you to contribute food or beverages for the reception.
- Neither Del Ray Artisans nor the City of Alexandria can be held liable for any loss or damage.
- Permission to photograph any work for publicity purposes is automatically granted by the artist as a requisite for entering the show.
- All unsold artwork must be picked up at the gallery on the day the show closes. All artwork left at the gallery after the 30-day deadline will become the property of Del Ray Artisans.
- Print out and keep a copy of this call for entry form for your records.

Important dates:

Show Runs: May 16 - June 1, 2014

Artwork drop-off: Sunday, May 11 from 6-8pm and Monday, May 12 from 6-8pm

Opening reception: Friday, May 16 from 7-9pm

Artwork pick-up: Sunday, June 1 from 6-8pm



Del Ray Artisans gallery
 Nicholas A. Colasanto Center
 2704 Mount Vernon Avenue
 Alexandria, VA 22301-1124
www.TheDelRayArtisans.org
 703.838.4827

Gallery Hours
 Thursdays: Noon – 6 pm
 First Thursdays: Noon – 9 pm
 Fridays: Noon – 9 pm
 Saturdays: Noon – 9 pm
 Sundays: Noon – 6 pm

Supported in part by:



ENTRY FORM Eyes On The Border

Del Ray Artisans & Art Latin American Collective Project
May 16 - June 1, 2014

Drop-off dates: Sunday, May 11 and Monday, May 12 from 6-8pm
(ALACP artists—bring accepted work only)

Show Entry Fee: \$5 per piece for DRA & ALACP members (*non-refundable*)

DRA & ALACP members please fill out:

Artist Name: _____

Address: _____

Phone(s): _____ Email: _____

SHOW ENTRIES (*DRA members only*)

	TITLE	MEDIA	PRICE
1)	_____	_____	_____
2)	_____	_____	_____
3)	_____	_____	_____

DRA & ALACP members sign here:

I agree to abide by the policies and regulations set forth in this Call for Entry, I hereby release Del Ray Artisans, the Officers, the Board of Directors, and the City of Alexandria from any responsibility or personal liability to me from any damage, claims or loss in connection with this show.

Check here to have DRA automatically take a 20% tax-deductible donation from the sale of artwork.

Signed _____ Date _____

Important dates:

Show Runs: May 16 - June 1, 2014

Artwork drop-off: Sunday, May 11 from 6-8pm and Monday, May 12 from 6-8pm

Opening reception: Friday, May 16 from 7-9pm

Artwork pick-up: Sunday, June 1 from 6-8pm



Del Ray Artisans gallery
Nicholas A. Colasanto Center
2704 Mount Vernon Avenue
Alexandria, VA 22301-1124
www.TheDelRayArtisans.org
703.838.4827

Gallery Hours
Thursdays: Noon – 6 pm
First Thursdays: Noon – 9 pm
Fridays: Noon – 9 pm
Saturdays: Noon – 9 pm
Sundays: Noon – 6 pm

Supported in part by:



FORMULARIO DE INSCRIPCIÓN
Ojos a la Frontera (Eyes On The Border)
Del Ray Artisans y Art Latin American Collective Project
16 de Mayo – 1 de Junio, 2014

Mas allá de los paisajes, culturas, fronteras y bordes, es el lenguaje artística del ser hermano. En esta exhibición colaborativa, los artistas de los Del Ray Artisans (DRA) y los Art Latin American Collective Project (ALACAP) están invitado a explorar esas temas universales desde una punta de vista individual.

Ojos a la Frontera (Eyes On The Border) es una celebración de arte latinoamericano y cultura, y como estamos influido por sitios, bordes, y fronteras...políticas y cultural; de verdad e imaginado. Artistas latinoamericanos quien viven y trabajan en los alrededores de Alexandria, y los los artistas del DRA con sus propios experiencias de fronteras y inmigración, pueden compartir sus raíces cultural y traducir sus realidades en una visión influido por el mundo virtual y de globalización. Un ensayo especial de máscaras de la colección de David Camero también acompañará esta exposición.

Curador de ALACP:David Camero (mactrovattore@yahoo.es)**Curadoras de DRA:**Michele Reday Cook (President@TheDelRayArtisans.org) y
Lesley Hall (Curating@TheDelRayArtisans.org)**Detalles de entrada:**

- Abierto solo a los miembros de DRA y ALACP
- La entrega de obras es Domingo (11 de Mayo), y Lunes (12 de Mayo), 18:00 – 20:00
- La tarifa no reembolsable por los miembros de DRA y ALACP es \$5 cada obra
- Artistas de DRA pueden entregar hasta 3 obras que representan la temas del ensayo
- Artistas de ALACP pueden presentar obras para selección directa a curador David Camero antes del 11 de Mayo. Las obras aceptadas deben de estar traído a la galería de DRA Domingo o Lunes (el 11 o 12 de Mayo), 18:00 – 20:00
- Cada obra debe de estar lista a colgar o exhibir, con alambra, el montaje y/o soporte de exhibición, enmarcado o con los bordes arreglado/completo. No podemos mostrar obras que no están listas para el ensayo.
- Ve www.TheDelRayArtisans.org/ArtGuidelines por detalles.

Requisitos de los artistas aceptadas:

- Los artistas son responsables de dejar y recoger las obras a la galería.
- Todos los artistas aceptados deben de actuar como un anfitrión de galería y/o voluntario de colgar la exhibición, trabajar durante la recepción de apertura, o la descolgada de la exhibición al final del ensayo. Por favor, tengan sus calendarios para consultar y marcar las días que se pueden ofrecerse de voluntario. También, les pediremos que llevar comida o bebidas para la recepción.
- Ni DRA ni la ciudad de Alexandria pueden ser considerados responsables por cualquier pérdida o daño.
- Permiso para fotografiar cualquier obra se concede automáticamente por el artista como un requisito para entrar en la exposición.
- Obras no compradas deben de ser recogidas a la día final de la exposición. Obras dejadas más que 30 días será propiedad del DRA.
- Imprima y guarde una copia de este formulario de inscripción para sus archivos.

Fechas importantes:**Exposición: 16 de Mayo a 1 de Junio, 2014****Entrega de obras: Domingo (11 de Mayo) y Lunes (12 de Mayo), 18:00 – 20:00****Recepción de apertura: Viernes (16 de Mayo), 19:00 – 21:00****Recogida de obras: Domingo (1 de Junio) 18:00 – 20:00**

Del Ray Artisans gallery
 Nicholas A. Colasanto Center
 2704 Mount Vernon Avenue
 Alexandria, VA 22301-1124
www.TheDelRayArtisans.org
 703.838.4827

Gallery Hours

Thursdays: Noon – 6 pm
First Thursdays: Noon – 9 pm
 Fridays: Noon – 9 pm
 Saturdays: Noon – 9 pm
 Sundays: Noon – 6 pm

Supported in part by:



FORMULARIO DE INSCRIPCIÓN
Ojos a la Frontera (Eyes On The Border)
Del Ray Artisans y Art Latin American Collective Project
16 de Mayo – 1 de Junio, 2014

Entrega de obras: Domingo (11 de Mayo) y Lunes (12 de Mayo), 18:00 – 20:00
(Artistas de ALACP—traigan obras ya aceptadas solas)

Tarifa de exhibición: \$5 cada obra por los miembros de DRA & ALACP (no reembolsable)

DRA & ALACP miembros:

Nombre y apellido de artista: _____

Dirección: _____

Teléfono: _____ Email: _____

OBRAS (miembros de DRA solo)

Table with 3 columns: TITULO, MATERIALES, PRECIO. Rows 1), 2), 3) with blank lines for entry.

Miembros de DRA y ALACP firman aquí:

Estoy de acuerdo en cumplir las políticas y normas establecidas en este formulario de inscripción, yo libero DRA, sus oficiales, junta de directores, y la ciudad de Alexandria de cualquier responsabilidad, civil o personal, para mi de cualquier daño, perdida, o reclamaciones en relación con este exhibición.

[] Marque aquí para que DRA tomar automáticamente una donación deducible-de-impuestos el 20% de la venta de obras.

Firma _____ Fecha _____

Fechas importantes:

Exposición: 16 de Mayo a 1 de Junio, 2014

Entrega de obras: Domingo (11 de Mayo) y Lunes (12 de Mayo), 18:00 – 20:00

Recepción de apertura: Viernes (16 de Mayo), 19:00 – 21:00

Recogida de obras: Domingo (1 de Junio) 18:00 – 20:00



Del Ray Artisans gallery
Nicholas A. Colasanto Center
2704 Mount Vernon Avenue
Alexandria, VA 22301-1124
www.TheDelRayArtisans.org
703.838.4827

Gallery Hours
Thursdays: Noon – 6 pm
First Thursdays: Noon – 9 pm
Fridays: Noon – 9 pm
Saturdays: Noon – 9 pm
Sundays: Noon – 6 pm

Supported in part by:



Solo or Small Group Exhibit
Del Ray Artisans Gallery Without Walls Program
Prudential PenFed Realty in Old Town Alexandria
Ongoing, starting July 2014

As part of its Gallery Without Walls (GWW) program, Del Ray Artisans (DRA) is seeking proposals for four-month shows at the Prudential PenFed Realty offices from individual artists or from a small group (no more than six) of artists. DRA has partnered with Prudential PenFed Realty for the past four years, offering auxiliary exhibiting opportunities for DRA members. In the past, selected pieces from an existing DRA show would “travel” to the Old Town office (300 N Washington St, Suite 100, Alexandria VA 22314). In recognition that our member artists have few opportunities to showcase a breadth of their artwork, we will now offer this venue as a solo or small group exhibit space, with artists selected through this entry form and electronic submissions after review by a curating committee.

The Prudential PenFed Realty office features two conference rooms, a large reception area and a long hallway, which can accommodate up to 45 two-dimensional pieces, depending on the size of the work. Prudential PenFed Realty has graciously offered to continue to host an opening reception for each show, and artists are encouraged to invite friends, family and supporters to this event. Exhibition dates will follow this rough schedule: Summer show – July through October; Fall show – November through February; Winter show – March through June.

Entry Details:

- These shows are open to Del Ray Artisans (DRA) members only. (Membership must be current.)
- Applicable Fees: Non-refundable \$5 submission fee; once an artist or group of artists is selected, the entry fee will be \$20 per artist.
- All artists must present a completed Entry Form including an Artist Statement describing type of works to be displayed (50 words or less) and Artist Bio(s) (1 page only). In addition, each artist is asked to provide representative digital images (five for a solo show; two per each artist for a group show) to Eileen O’Brien, GWW@TheDelRayArtisans.org by **June 1st, 2014**. Indicate on the entry form if you are submitting as solo artist or as part of a small group.
- Acceptance is at the curating committee’s discretion; artists will be notified via email or phone call by June 15th, 2014. The committee reserves the right to combine solo shows if necessary.
- Due to safety concerns and display limitations, only two-dimensional art will be considered.

Accepted Artist Requirements:

- Artists are responsible for hanging their own artwork; a hanging system is in place and materials will be supplied. (The tentative hanging date for the first show is Sunday, June 29th, 2014.)
- Artists are responsible for the delivery of sold work to the customer. Artists may replace sold artwork with similar pieces. (Prudential PenFed reserves the right to review replacement pieces.)
- When art sells, each artist is asked to make a 10% donation (tax-deductible) to Del Ray Artisans.
- Del Ray Artisans, Prudential PenFed Realty and the City of Alexandria cannot be held liable for any loss or damage to artwork at any time. Insurance for artwork is the sole responsibility of the artist.
- Permission to photograph any artwork for DRA publicity purposes is automatically granted by the artist as a requisite for entering the show.
- All art entered must be original—no reproductions. Contact GWW@TheDelRayArtisans.org for more information.
- Print out and keep a copy of both sides of this call for entry/entry form for your records.



Del Ray Artisans gallery
Nicholas A. Colasanto Center
2704 Mount Vernon Avenue
Alexandria, VA 22301-1124
www.TheDelRayArtisans.org
703.838.4827

Thursdays: Noon – 6 pm
First Thursdays: Noon – 9 pm
Fridays: Noon – 9 pm
Saturdays: Noon – 9 pm
Sundays: Noon – 6 pm

Supported in part by:



**Solo or Small Group Exhibit
Del Ray Artisans Gallery Without Walls Program
Prudential PenFed Realty in Old Town Alexandria
Entry Form**

Digital Submissions Due: Sunday, June 1st, 2014

Applicable Fees: \$5 non-refundable submission fee; once an artist or group of artists is selected, the entry fee will be \$20 per artist. Each artist in your small group must fill out this form; indicate if you are submitting as part of a small group below.

Artist Name: _____

Address: _____

Phone(s): _____

Email: _____

Solo –or– Small group; list group members' names: _____

List sample artwork submitted digitally below: (if part of a small group, enter only 2 pieces here)

	TITLE	MEDIA	PRICE
1)	_____	_____	\$ _____
2)	_____	_____	\$ _____
3)	_____	_____	\$ _____
4)	_____	_____	\$ _____
5)	_____	_____	\$ _____

I agree to abide by the policies and regulations set forth in this Call for Entry, I hereby release Prudential PenFed Realty, Prudential PenFed Realtors, Del Ray Artisans, the Officers, the Board of Directors, and the City of Alexandria from any responsibility or personal liability to me from any damage, claims or loss in connection with this show.

Check here to have Del Ray Artisans automatically take a 10% tax-deductible donation from the sale of artwork.

Signed _____ Date _____



Del Ray Artisans gallery
Nicholas A. Colasanto Center
2704 Mount Vernon Avenue
Alexandria, VA 22301-1124
www.TheDelRayArtisans.org
703.838.4827

Thursdays: Noon – 6 pm
First Thursdays: Noon – 9 pm
Fridays: Noon – 9 pm
Saturdays: Noon – 9 pm
Sundays: Noon – 6 pm

Supported in part by:



Del Ray Artisans - Call for Entry - June 6 – 29, 2014

SUITES: Scandalous, Uproarious, Intriguing Titillating Entanglements & Seductions

Shocking, funny, arousing curiosity, exciting, compromising, temptations ... what do these words bring to mind? Show us in your own medium what these words mean to you. Make us laugh, make us blush ... or both!

Having trouble visualizing something? Look up each word in the "SUITES" show title for inspiration. Or, since our collaboration with the Little Theater of Alexandria (LTA) this year is with their production of Neil Simon's "Plaza Suite", dive into the screenplay for ideas!

Please note! This is the first of what we hope to be an annual collaboration with the Little Theater of Alexandria (LTA). Because of that, we will be taking particular care in jurying the show to make sure all entries adhere to the "SUITES" theme based on Neil Simon's "Plaza Suite."

We are looking for a donation of several artworks for a silent auction during our fundraising reception at LTA on June 13th. If you are willing to donate a piece of art for our fundraiser that evening, please contact the curators.

Curators: Tracy Wilkerson (RecycledWorks@yahoo.com) and John Bordner (JBordner@wiscenterprises.com)

Entry Details:

- Open to all area artists
- Artwork Dropoff:
 - Sunday, June 1, 6:30 – 8:30pm
 - Monday, June 2, 6:30 – 8:30pm
- Artists may submit up to 3 pieces of artwork
- Show Entry Fees: Non-refundable entry fee is \$5 per piece for members, \$8 per piece for non-members.
- ALL mediums encouraged - for big or involved pieces, please coordinate with the Curators ahead of time
- Your art must be ready to hang or display with wire and screw eyes, mounting and/or display stand, framed, matted, or with edges finished. We cannot show work that is not ready for exhibition. See TheDelRayArtisans.org/ArtGuidelines for details.
- When your art sells, your 20% tax-deductible donation to Del Ray Artisans will be taken out of your check before it is mailed to you.

Accepted Artist Requirements:

- Artists are responsible for drop-off/pick-up of artwork before and after show.
- All artists **MUST** gallery sit and/or volunteer with opening reception and/or take down. Please bring your calendars to artwork dropoff so you can sign up for duties. We'll ask you to contribute a food or beverage for the opening reception.
- Insurance for artwork is the responsibility of the artist. Neither Del Ray Artisans nor the City of Alexandria can be held liable for any loss or damage.
- Permission to photograph any work for publicity purposes is automatically granted by the artist as a requisite for entering the show.
- Work must be original (no reproductions) within the last 3 years and not previously exhibited in a DRA show.
- Any artwork left over 30 days after the close of the show will become property of Del Ray Artisans.
- Make a copy of this Call for Entry contract for your records.



Del Ray Artisans gallery
Nicholas A. Colasanto Center
2704 Mount Vernon Avenue
Alexandria, VA 22301-1124
www.TheDelRayArtisans.org
703.838.4827

Thursdays: Noon – 6 pm
First Thursdays: Noon – 9 pm
Fridays: Noon – 9 pm
Saturdays: Noon – 9 pm
Sundays: Noon – 6 pm

Supported in part by:



Del Ray Artisans - Call for Entry - June 6 – 29, 2014

SUITES: Scandalous, Uproarious, Intriguing Titillating Entanglements & Seductions

Drop Off Dates: June 1 & 2, 6:30 – 8:30pm

Entry Fee: 3 pieces - non-refundable entry fee - \$5 per piece (members), \$8 per piece (non-members)

Artist Name: _____

Address: _____

Phone(s): _____

E-mail: _____

List artwork below:

	TITLE	MEDIA	PRICE
1)	_____	_____	\$ _____
2)	_____	_____	\$ _____
3)	_____	_____	\$ _____

I agree to abide by the policies and regulations set forth in this Call for Entry, I hereby release Del Ray Artisans, the Officers, the Board of Directors, and the City of Alexandria from any responsibility or personal liability to me from any damage, claims or loss in connection with this show.

Check here to have DRA automatically take a 20% tax-deductible donation from the sale of artwork.

Signed _____ Date _____

Important Dates:

Artwork Drop Off:	June 1 & 2, 6:30 – 8:30pm
Non-Accepted Artwork Pickup:	June 5, 12 – 6pm
Opening Reception:	June 6, 6 – 9pm at DRA gallery in Del Ray
LTA Fundraiser Reception:	June 13, 6 – 9pm at Little Theatre of Alexandria in Old Town
Show Closes/Artwork Pickup:	June 29, 6 – 8pm



Del Ray Artisans gallery
Nicholas A. Colasanto Center
2704 Mount Vernon Avenue
Alexandria, VA 22301-1124
www.TheDelRayArtisans.org
703.838.4827

Thursdays: Noon – 6 pm
First Thursdays: Noon – 9 pm
Fridays: Noon – 9 pm
Saturdays: Noon – 9 pm
Sundays: Noon – 6 pm

Supported in part by:

